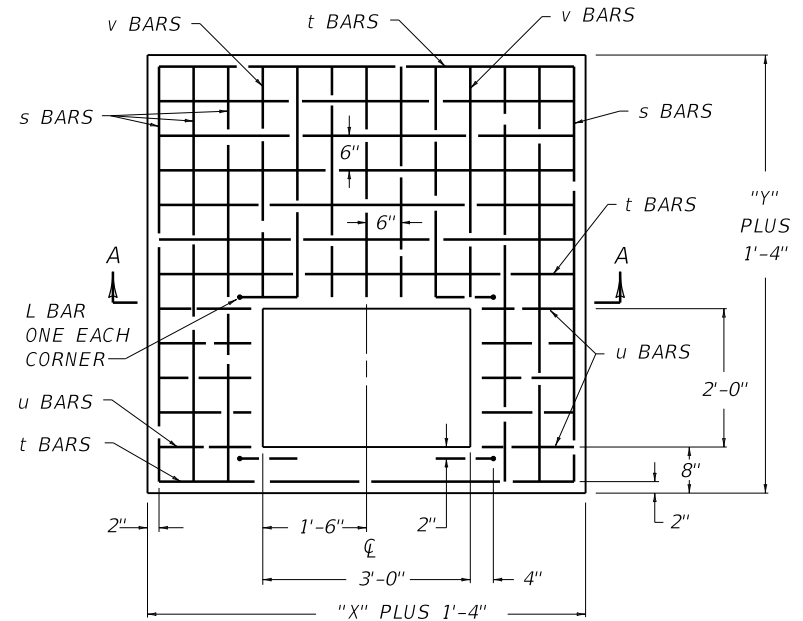


REINFORCEMENT STEEL FOR 8" LID

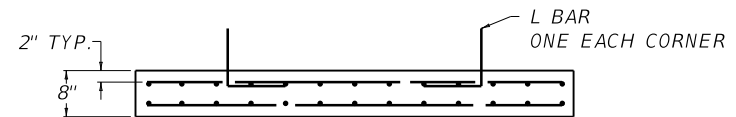
~ NOTES ~

SIZE		NO. 5 STEEL BARS								LBS.
X	Y	BAR s		BAR t		BAR u		BAR v		
		QTY.	LIN. FT.	QTY.	LIN. FT.	QTY.	LIN. FT.	QTY.	LIN. FT.	
3'-0"	2'-0"	-	-	-	-	-	-	-	-	7
	2'-6"	4	3'-6"	6	4'-0"	-	-	0'-10"	59	
	3'-0"		4'-0"	8				1'-4"	77	
	3'-6"		4'-6"	10				1'-10"	94	
	4'-0"		5'-0"	12				2'-4"	112	
	4'-6"		5'-6"	14				2'-10"	130	
5'-0"	6'-0"		16	3'-4"				147		
3'-6"	2'-0"	4	3'-0"	4	4'-6"	-	-	-	38	
	2'-6"		3'-6"	6				0'-10"	62	
	3'-0"		4'-0"	8				1'-4"	81	
	3'-6"		4'-6"	10				1'-10"	100	
	4'-0"		5'-0"	12				2'-4"	118	
	4'-6"		5'-6"	14				2'-10"	137	
4'-0"	2'-0"	8	3'-0"	4	5'-0"	20	0'-10"	-	70	
	2'-6"		3'-6"	6				0'-10"	97	
	3'-0"		4'-0"	8				1'-4"	119	
	3'-6"		4'-6"	10				1'-10"	141	
	4'-0"		5'-0"	12				2'-4"	163	
	4'-6"		5'-6"	14				2'-10"	185	
4'-6"	2'-0"	8	3'-0"	4	5'-6"	20	1'-1"	-	78	
	2'-6"		3'-6"	6				0'-10"	105	
	3'-0"		4'-0"	8				1'-4"	128	
	3'-6"		4'-6"	10				1'-10"	151	
	4'-0"		5'-0"	12				2'-4"	174	
	4'-6"		5'-6"	14				2'-10"	197	
5'-0"	2'-0"	12	3'-0"	4	6'-0"	20	1'-4"	-	97	
	2'-6"		3'-6"	6				0'-10"	127	
	3'-0"		4'-0"	8				1'-4"	154	
	3'-6"		4'-6"	10				1'-10"	180	
	4'-0"		5'-0"	12				2'-4"	207	
	4'-6"		5'-6"	14				2'-10"	233	
	5'-0"		6'-0"	16			3'-4"	259		

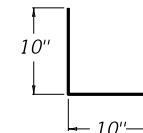
1. IN ADDITION TO THE CHARTED STEEL, FOUR "L" BARS ARE REQUIRED IN THE LID AND ARE INCLUDED IN THE TOTALS.
2. CONCRETE QUANTITIES FOR LID ARE INCLUDED ON "DIMENSIONS AND ESTIMATE OF QUANTITIES (PIPE CHAMBER)", SEE CUR. STD. DWG. [RDB-410](#).
3. REINFORCEMENT SHALL HAVE A CLEAR DISTANCE OF 2" FROM THE OUTSIDE FACE UNLESS OTHERWISE SHOWN.



DETAIL OF 8" LID
PLAN VIEW



SECTION A-A



L BAR DETAIL

USE WITH CUR. STD. DWGS.
[RDB-271](#) [RDB-272](#) [RDB-400](#)
[RDB-410](#) [RDB-420](#) [RDB-270](#)

KENTUCKY
DEPARTMENT OF HIGHWAYS

CURB BOX INLET
TYPE A
(DETAIL & BAR CHART FOR 8" LID)

STANDARD DRAWING NO. [RDB-273-06](#)

SUBMITTED	<i>[Signature]</i>	12-01-15
DIRECTOR	STATE DEPT. OF DESIGN	DATE
APPROVED	<i>[Signature]</i>	12-01-15
	STATE HIGHWAY ENGINEER	DATE